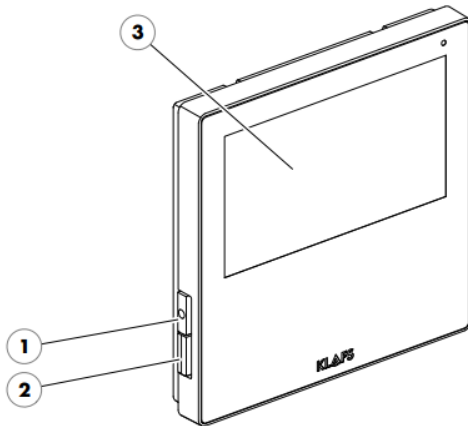


## Sauna guide

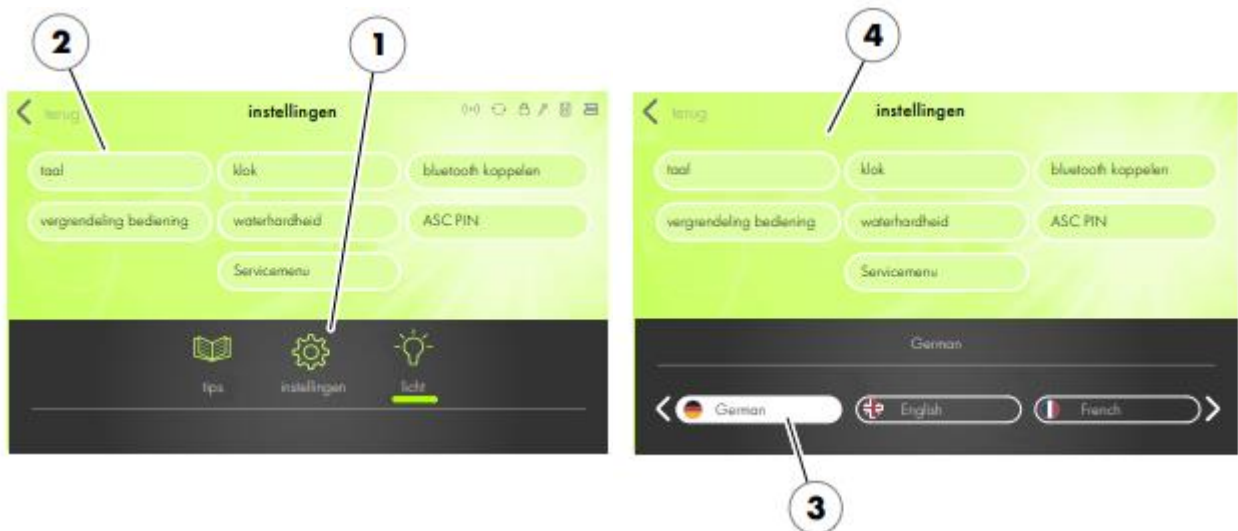
### Basics

1. Power on/off
2. Light on/off
3. Touchscreen



### Choose language

1. Go to 'instellingen'
2. Press 'taal'
3. Choose language
4. Confirm chosen language



## Settings

1. Select bathing method
2. Press 'sauna'
3. Select bath time and temperature
4. Press 'start'



When finished, press 'stop' and turn off the sauna and the lights with the power button.